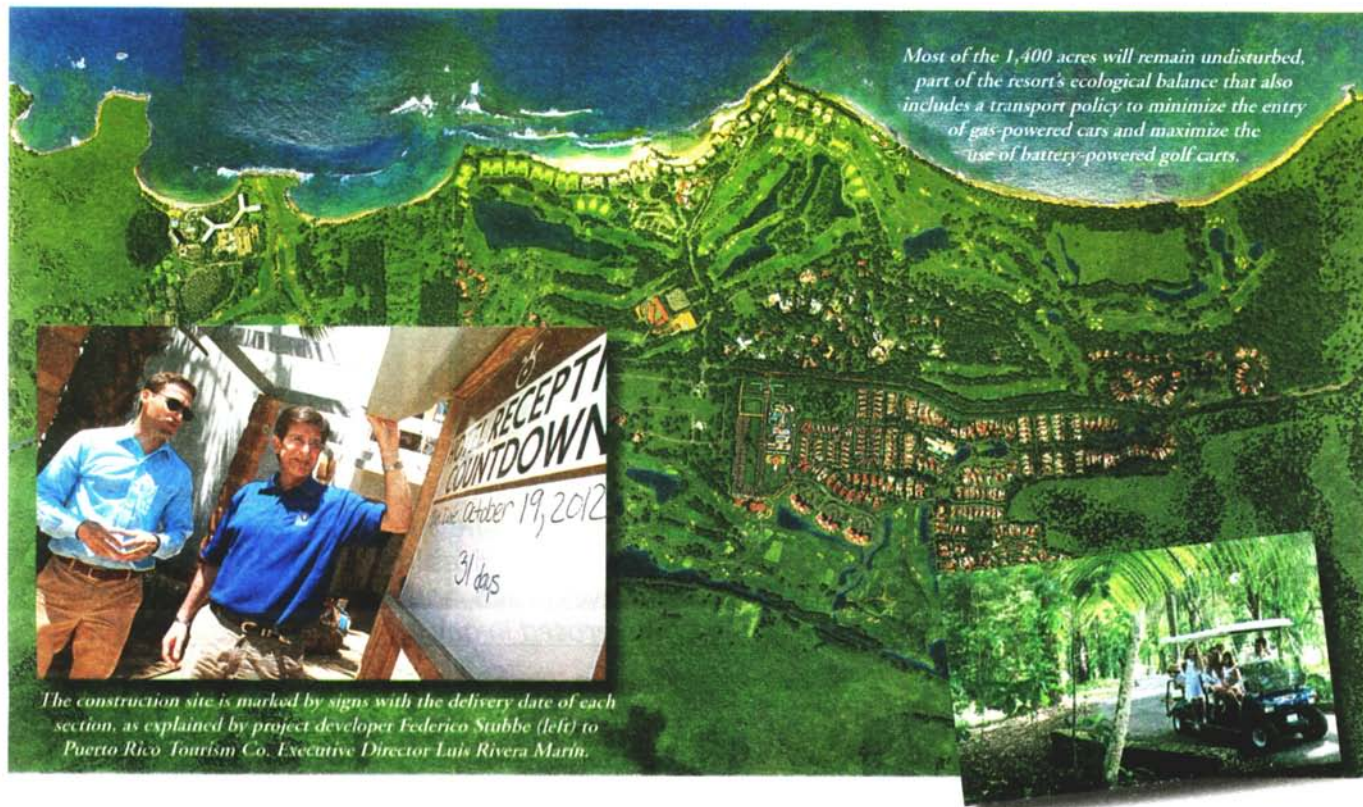


# Target 12/12/12 at Dorado Beach

That's the inauguration date for the world's second Ritz-Carlton Reserve



BY ALEX DÍAZ  
alex@caribbeanbusiness.pr

“The construction site is already a sight to behold, so imagine the finished product.”

That was the reaction of Puerto Rico Tourism Co. Executive Director Luis Rivera Marín as he and other agency personnel received a private site tour of the Dorado Beach Ritz-Carlton Reserve from developer Federico Stubbe Jr.

It is a sight to behold, indeed, the second Ritz-Carlton Reserve resort in the world, coming less than a year after the opening of the exclusive 54-villa Phulay Bay in Thailand.

Much has been written about the 114-room, 20-villa Dorado Beach, most recently by this newspaper (March 15), and how the 1,400-acre resort will project the essence of

the Reserve brand: ultimate luxury set in remote, nature-rich locations and taking on the unique history and personality of the place where it's built.

As such, no two Reserves will be alike. The architecture is designed to be different every time—in Dorado's case, a mixture of tropical and

Rockefeller family 30 years later.

That history will be part of the mystique, along with images and narratives of Puerto Rico's original inhabitants, the Taínos, multiple paintings and sculptures by Puerto Rican artists, and inspiring ecosystem preservation.

Most of the 1,400 acres will remain

“This is designed to give Puerto Rico a new standing among luxury travelers from all over the planet,” Stubbe said.

contemporary, with touches from the old Dorado Beach, most notably the Su Casa Plantation House. The latter is the first hotel property built on the site in the 1920s and acquired by the

undisturbed, part of the resort's ecological balance that includes constructing LEED Silver buildings around old, native trees; raised walkways meant to leave the ground

beneath to plants and crawling fauna; habitats connected by natural corridors; Jean-Michel Cousteau's Ambassadors of the Environment educational-experience offering; and a transport policy to minimize the entry of gas-powered cars and maximize the use of battery-powered golf carts.

LEED is the Leadership in Energy & Environmental Design standard for green buildings. The Silver certification or higher has been obtained by fewer than 50 hotel properties in the world.

The Botanical Spa alone will no doubt become a main attraction, with its awe-inspiring, high-ceiling, open-air design, outdoor hot tubs, massage beds up in tree houses, and the surrounding gardens growing the spices to be used on and by guests.

Then there's the José Andrés





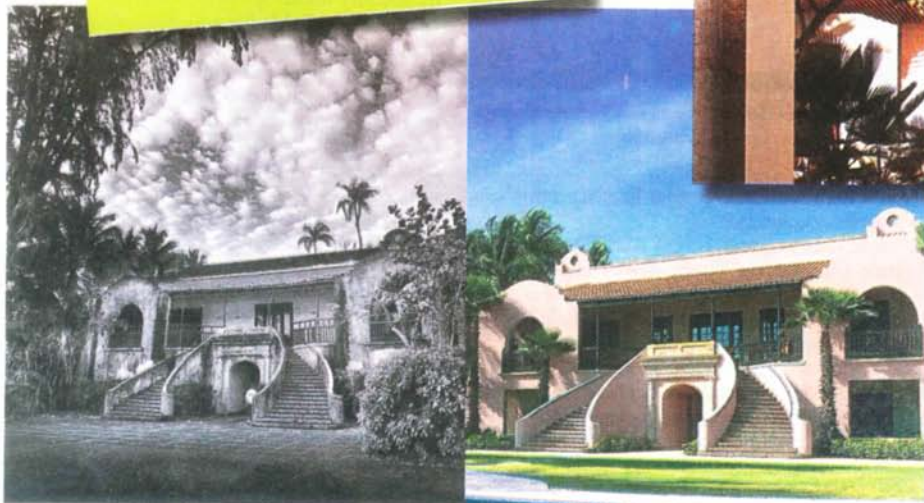
Among the key attractions offered at the resort are the Watermill aquatic adventure park and the exclusive Botanical Spa.

signature restaurant, designed personally by the master chef down to the knives and forks; bartender training offered by coaches from the United Kingdom "to create a truly unique dining experience," Stubbe said; not one, but four Robert Trent Jones Sr. golf courses and two clubhouses; the Watermill aquatic adventure park; and rooms to absolutely die for, with their private plunge pools, luxury details and pampering concierge service.

For those who don't just want to stay at the hotel but would rather live in the place, the master plan calls for oceanfront residences, estate homes and golf villas, all managed under the Ritz-Carlton flag. ■



"The Dorado Beach is roaring back," added Rivera Marín, "and we will work with the Ritz-Carlton to make sure the entire world knows it."



A rendering of the hotel with a view to the ocean.

Su Casa Plantation House, the first hotel property built on the site in the 1920s and acquired by the Rockefeller family 30 years later, has been restored to its original charm and splendor.

